

The CRAFFT pathway for wrist fractures in children

Does a child need surgery?

- ✓ Wrist fracture?
- ✓ Aged 10 years or under?
- ✓ Displaced ?
- ✓ Within the distal segment?
- ✓ Neurovascularly intact?



The distal segment is defined using the AO square - an imaginary square whose side length equals the maximum combined width of the distal radial and ulnar growth plates.

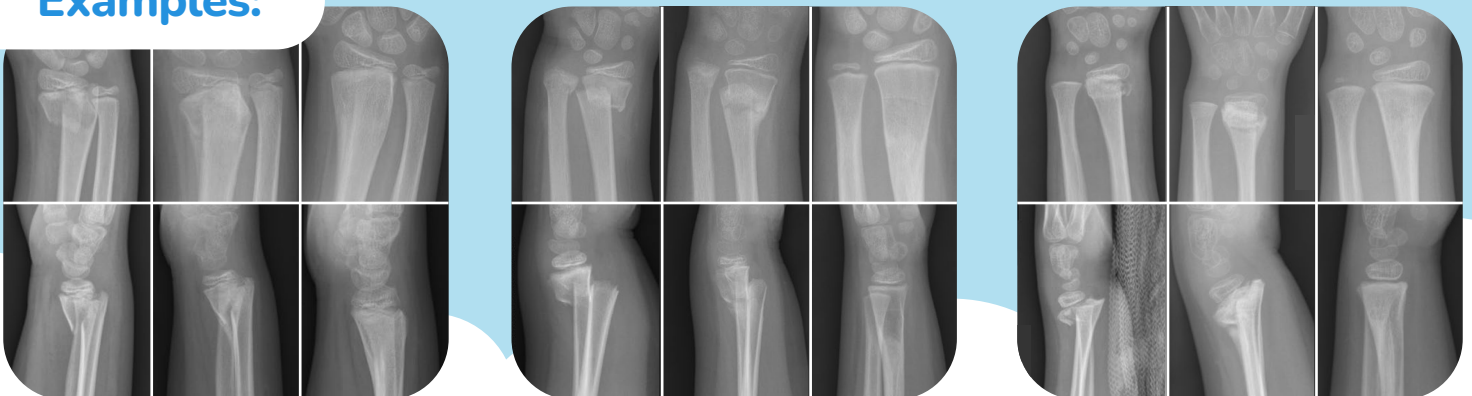
The answer:
Cast first. Operate exceptionally.



The evidence:
 No meaningful difference in function. A modest difference in cosmesis that improved with time. Surgery added cost and procedural complications.



Examples:



Be CRAFFTY – Cast First

Read the evidence at www.TOTSresearch.org · Published in The Lancet

